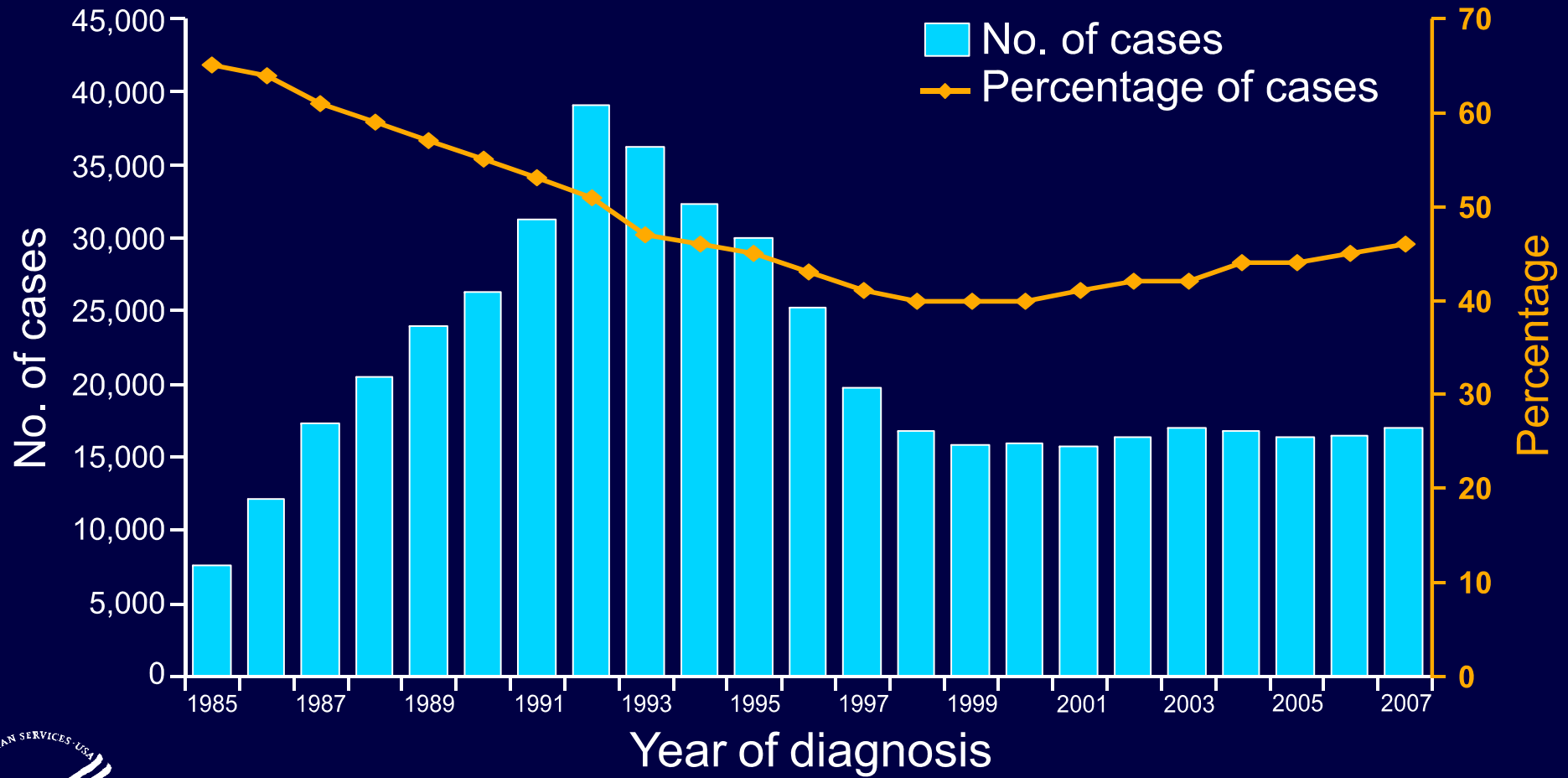


# Estimated Numbers and Percentages of AIDS Cases among Adult and Adolescent Men Who Have Sex with Men 1985–2007—United States and Dependent Areas



Note. Data have been adjusted for reporting delays and missing risk-factor information. Data exclude cases among men who had sex with other men and injected drugs.



# Estimated AIDS Cases in Males, Cumulative through 2007—50 States and DC

Of the 1,009,219 AIDS cases in adults and adolescents

80% were in males

60% of cases in males were attributed to  
male-to-male sexual contact

4% of cases in males were aged 13–24 years

66% of cases in males aged 13–24 were  
attributed to male-to male sexual contact

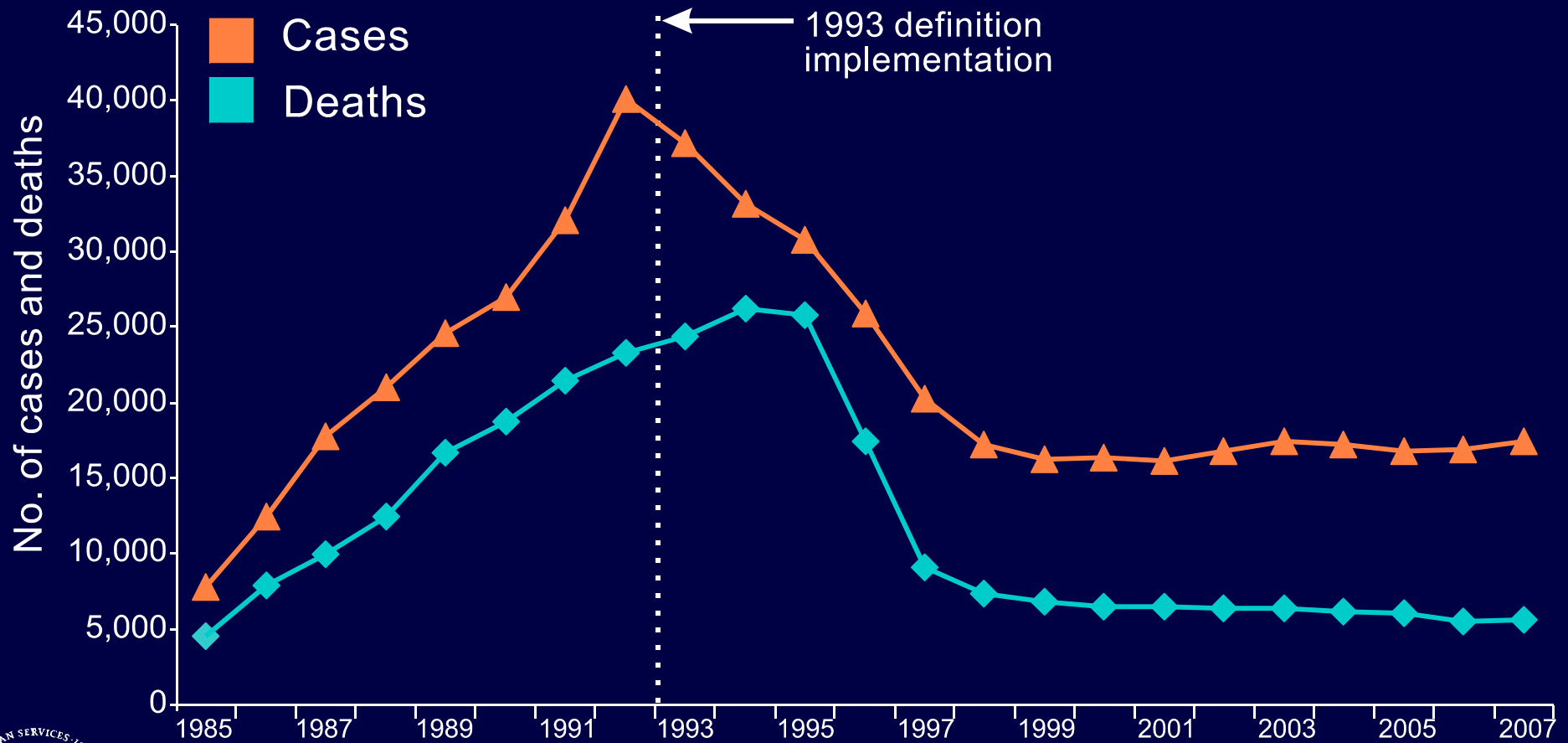
Of AIDS cases diagnosed during 2007, 47% of cases  
in adults and adolescents were attributed to male-to-male



Note. Data have been adjusted for reporting delays and missing risk-factor information.  
Data exclude cases among men who had sex with other men and injected drugs.



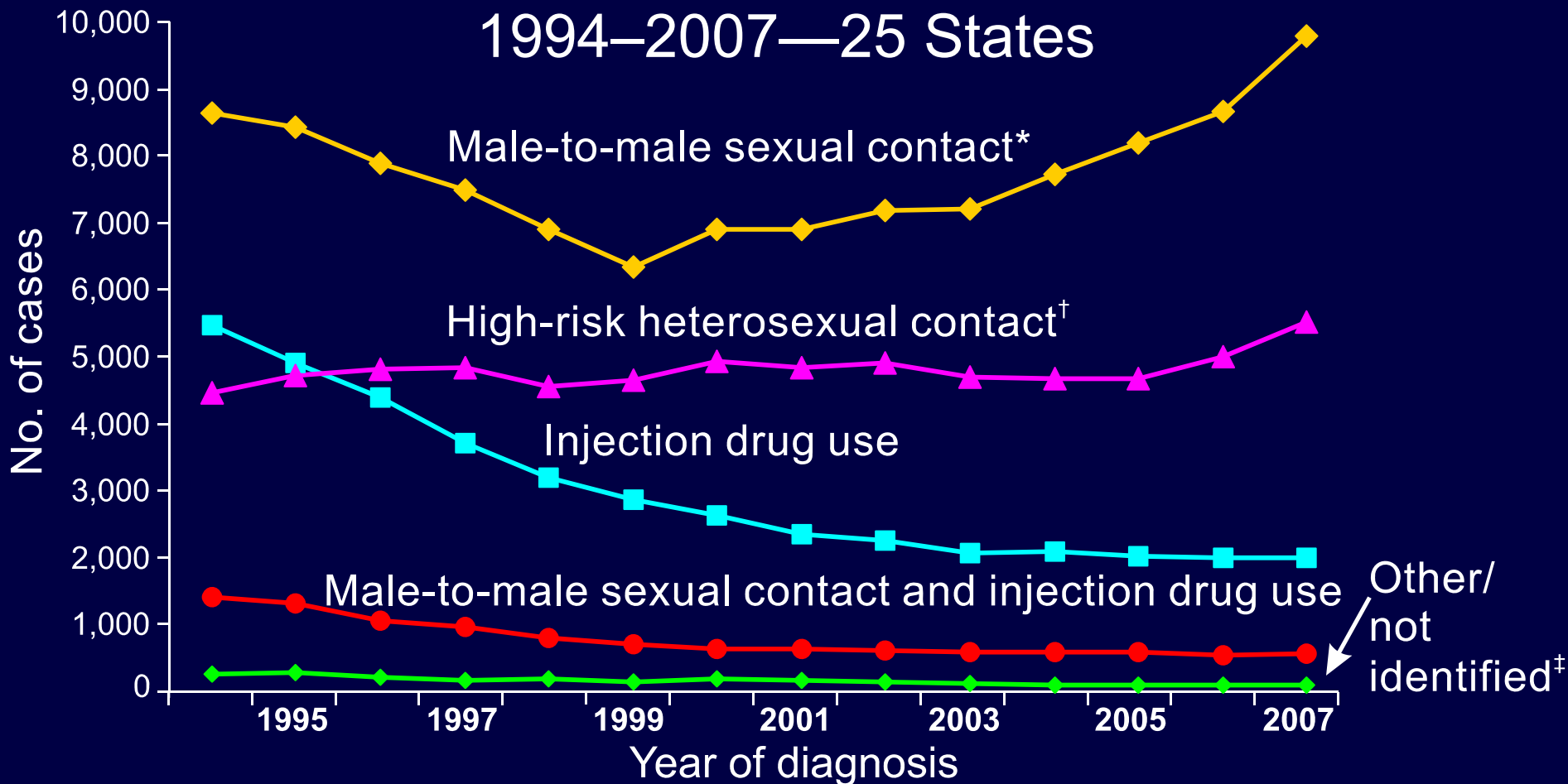
# Estimated Numbers of AIDS Cases and Deaths among Men Who Have Sex with Men 1985–2007—United States and Dependent Areas



Note. Data have been adjusted for reporting delays and missing risk-factor information. Data exclude cases among men who had sex with other men and injected drugs.



# Estimated Numbers of HIV/AIDS Cases among Adults and Adolescents, by Transmission Category 1994–2007—25 States



Note. Data include persons with a diagnosis of HIV infection regardless of their AIDS status at diagnosis. Data from 25 states with confidential name-based HIV infection reporting since at least 1994. Data have been adjusted for reporting delays and missing risk-factor information.

\*Data on male-to-male sexual contact exclude cases among men who reported sexual contact with other men and injection drug use.

†Heterosexual contact with a person known to have, or to be at high risk for, HIV infection.

‡Includes hemophilia, blood transfusion, perinatal exposure, and risk factor not reported or not identified.



# Estimated Numbers and Percentages of HIV/AIDS Cases among Adults and Adolescents, by Transmission Category 2007—34 States

Transmission category	No.	%
Male-to-male sexual contact <sup>*</sup>	22,472	53
Injection drug use	4,939	12
Male-to-male sexual contact and injection drug use	1,260	3
High-risk heterosexual contact <sup>†</sup>	13,627	32
Other/not identified <sup>‡</sup>	198	<1
<b>Total</b>	<b>42,495</b>	

Note. Data include persons with a diagnosis of HIV infection regardless of their AIDS status at diagnosis. Data from 34 states with confidential name-based HIV infection reporting since at least 2003. Data have been adjusted for reporting delays and missing risk-factor information.

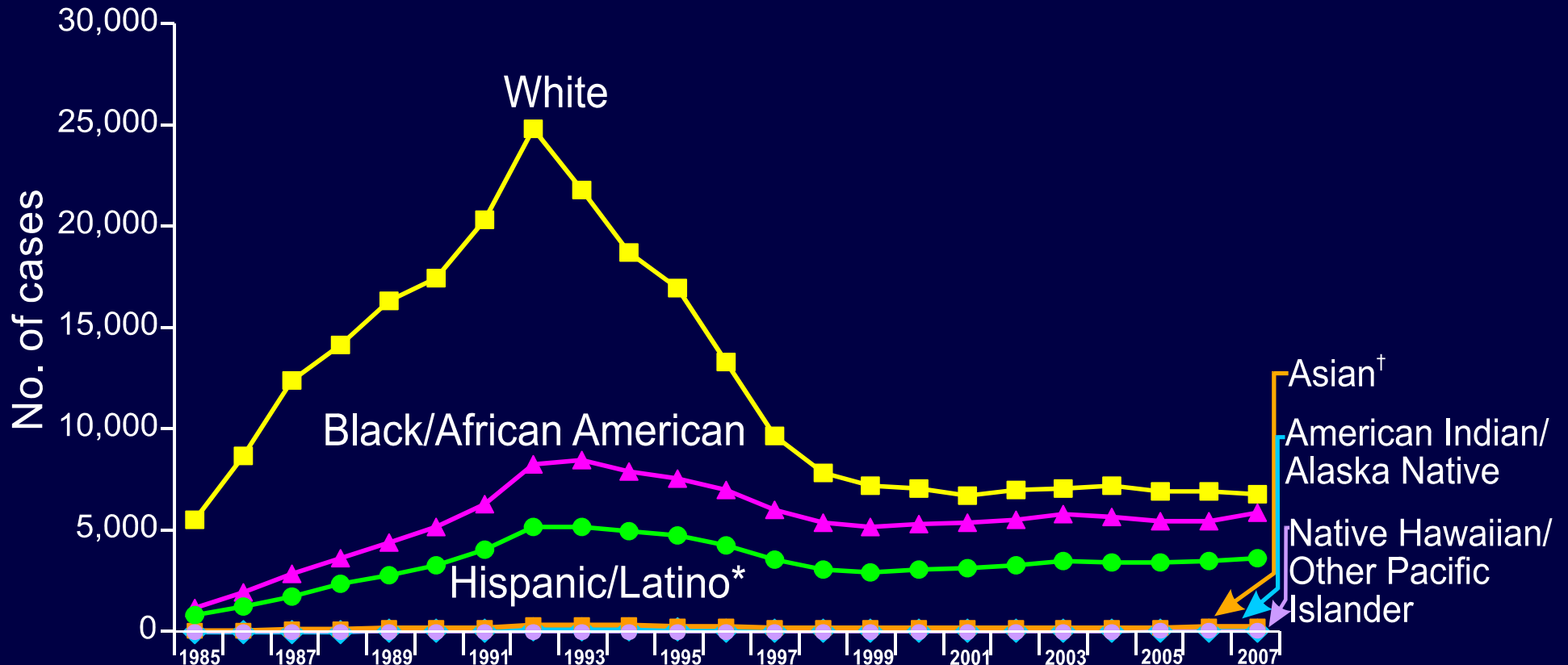
<sup>\*</sup>Data exclude cases among men who had sex with other men and injected drugs.

<sup>†</sup>Heterosexual contact with a person known to have, or to be at high risk for, HIV infection.

<sup>‡</sup>Includes hemophilia, blood transfusion, perinatal exposure, and risk factor not reported or not identified.



# Estimated Numbers of AIDS Cases among Adult and Adolescent Men Who Have Sex with Men, by Race/Ethnicity 1985–2007—United States and Dependent Areas



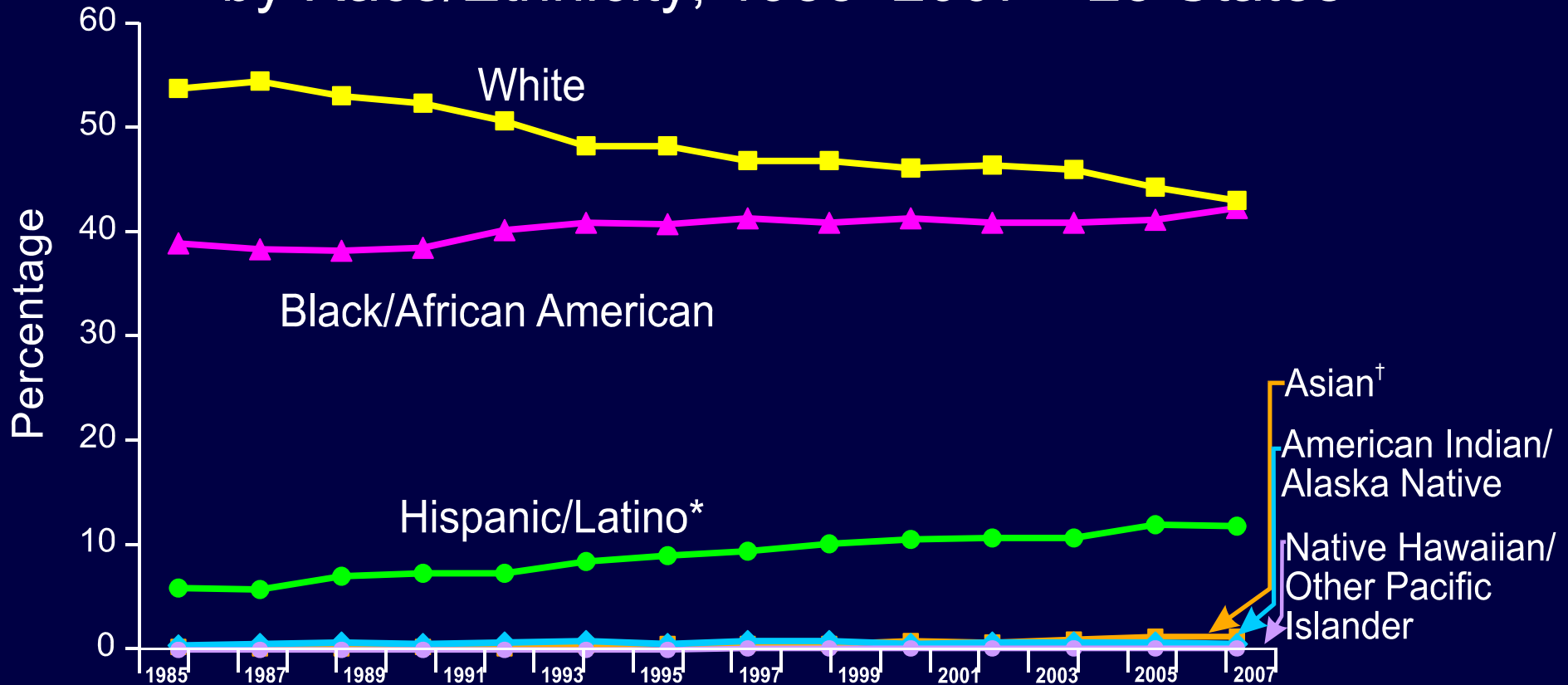
Note. Data have been adjusted for reporting delays and missing risk-factor information. Data exclude cases among men who had sex with other men and injected drugs.

\*Hispanics/Latinos can be of any race.

†Includes Asian and Pacific Islander legacy cases.



# Percentages of Estimated HIV/AIDS Cases among Adult and Adolescent Men Who Have Sex with Men by Race/Ethnicity, 1985–2007—25 States



Note. Data include persons with a diagnosis of HIV infection regardless of their AIDS status at diagnosis. Data from 25 states with confidential name-based HIV infection reporting since at least 1994. Data have been adjusted for reporting delays and missing risk-factor information. Data exclude cases among men who had sex with other men and injected drugs.

\*Hispanics/Latinos can be of any race.

†Includes Asian and Pacific Islander legacy cases.



# Estimated Numbers of Adult and Adolescent Men Who Have Sex with Men Living with HIV/AIDS, by Race/Ethnicity 2004–2007—34 States

Year	American Indian/ Alaska Native	Asian*	Black/African American	Hispanic/Latino <sup>†</sup>	Native Hawaiian/ Other Pacific Islander	White
2004	836	1,232	67,725	32,589	82	104,007
2005	891	1,418	72,680	35,391	105	109,406
2006	956	1,604	78,148	38,343	136	115,013
2007	1,052	1,883	84,965	41,866	171	121,702



Note. Data include persons with a diagnosis of HIV infection regardless of their AIDS status at diagnosis. Data from 34 states with confidential name-based HIV infection reporting since at least 2003. Data have been adjusted for reporting delays and missing risk-factor information. Data exclude cases among men who had sex with other men and injected drugs.

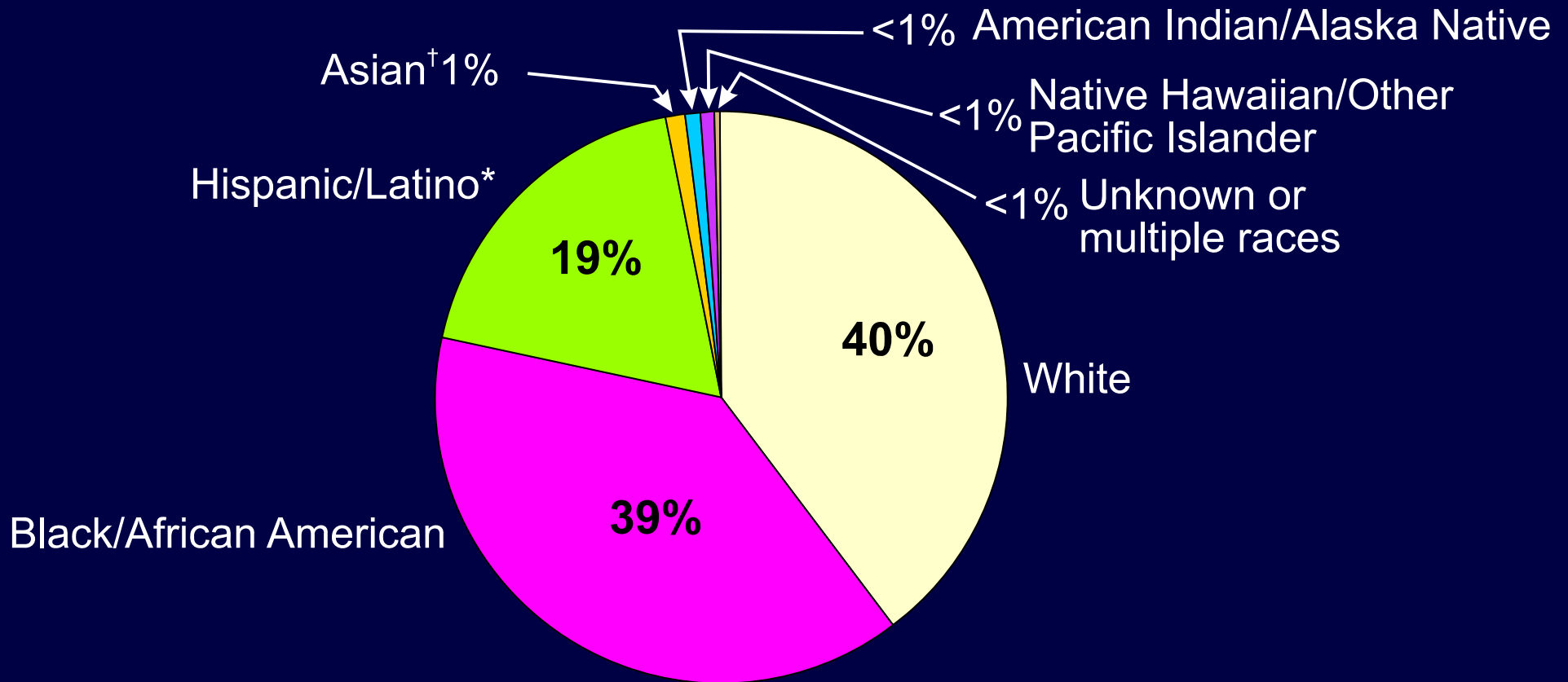
\*Includes Asian and Pacific Islander legacy cases.

<sup>†</sup>Hispanics/Latinos can be of any race.





# Percentages of Estimated HIV/AIDS Cases among Adult and Adolescent Men Who Have Sex with Men by Race/Ethnicity 2007—34 States



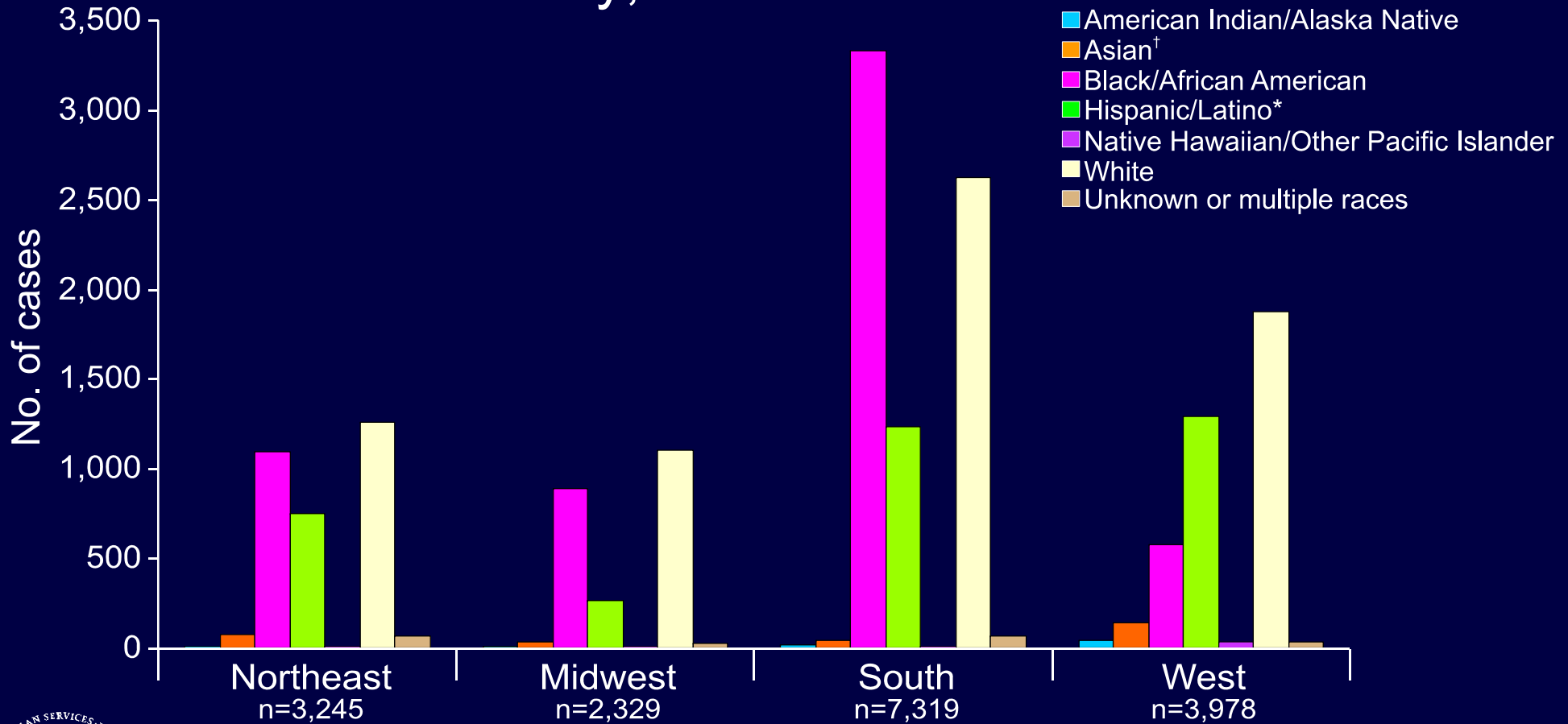
Note. Data include persons with a diagnosis of HIV infection regardless of their AIDS status at diagnosis. Data from 34 states with confidential name-based HIV infection reporting since at least 2003. Data have been adjusted for reporting delays and missing risk-factor information. Data exclude cases among men who had sex with other men and injected drugs.

†Includes Asian and Pacific Islander legacy cases.

\*Hispanics/Latinos can be of any race.



# Estimated Numbers of AIDS Cases among Adult and Adolescent Men Who Have Sex with Men, by Region and Race/Ethnicity, 2007—50 States and DC



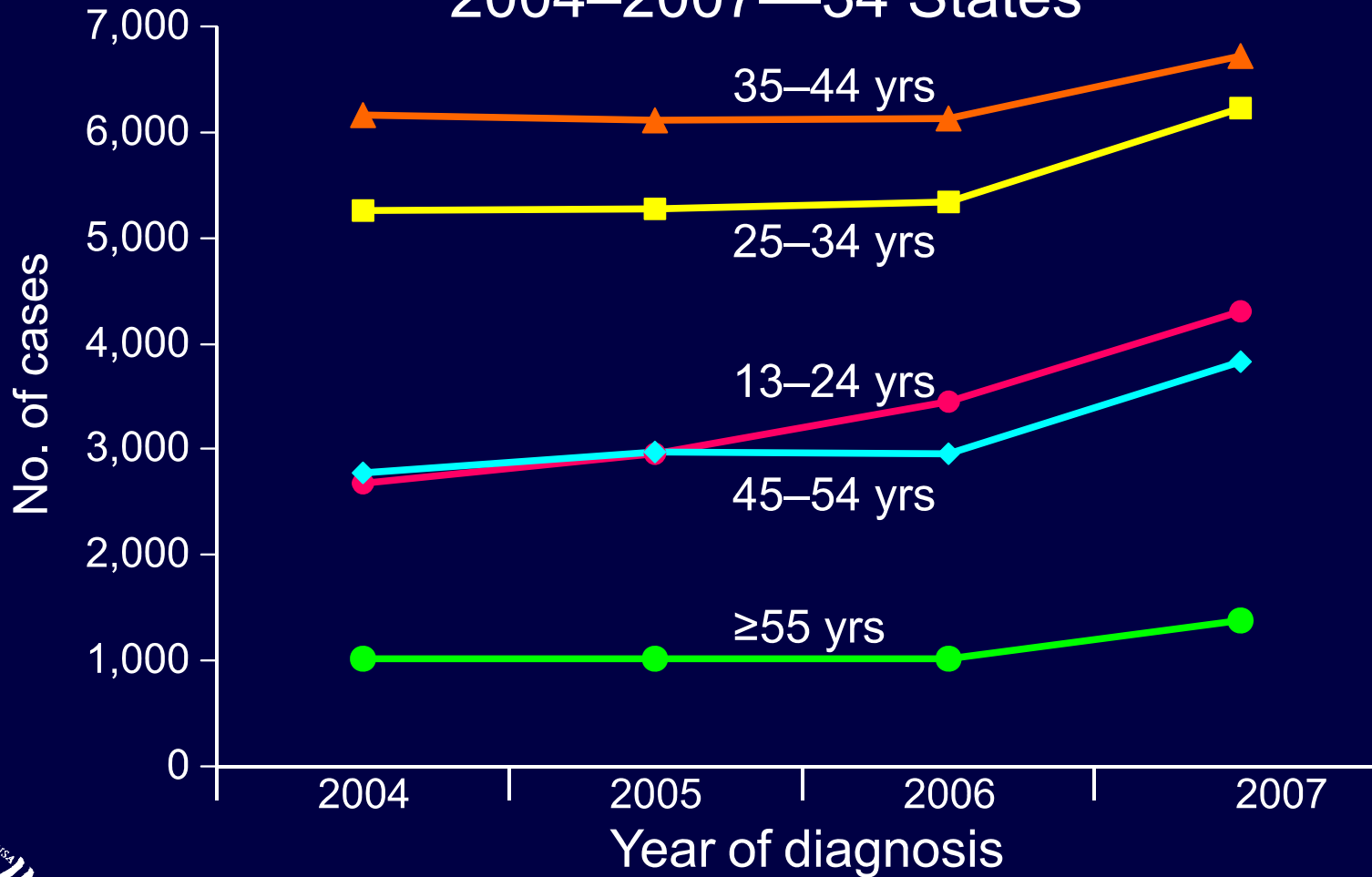
Note. Data have been adjusted for reporting delays and missing risk-factor information. Data exclude cases among men who had sex with other men and injected drugs.

†Includes Asian and Pacific Islander legacy cases.

\*Hispanics/Latinos can be of any race.



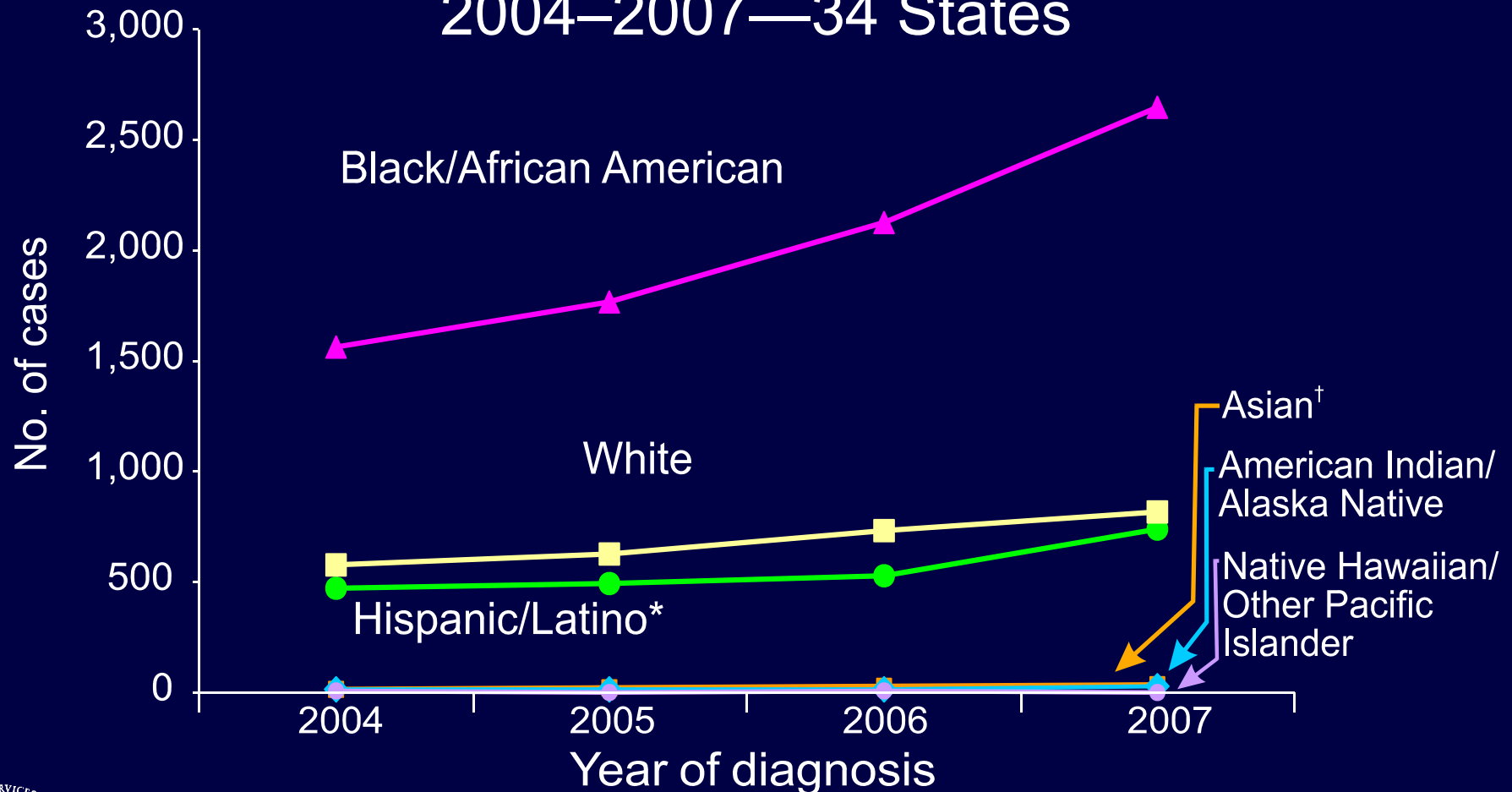
# Estimated Numbers of HIV/AIDS Cases among Adult and Adolescent Men Who Have Sex with Men, by Age Group 2004–2007—34 States



Note. Data include persons with a diagnosis of HIV infection regardless of their AIDS status at diagnosis. Data from 34 states with confidential name-based HIV infection reporting since at least 2003. Data have been adjusted for reporting delays and missing risk-factor information. Data exclude cases among men who had sex with other men and injected drugs.



# Estimated Numbers of HIV/AIDS Cases among Men Who Have Sex with Men, Aged 13–24 Years, by Race/Ethnicity 2004–2007—34 States



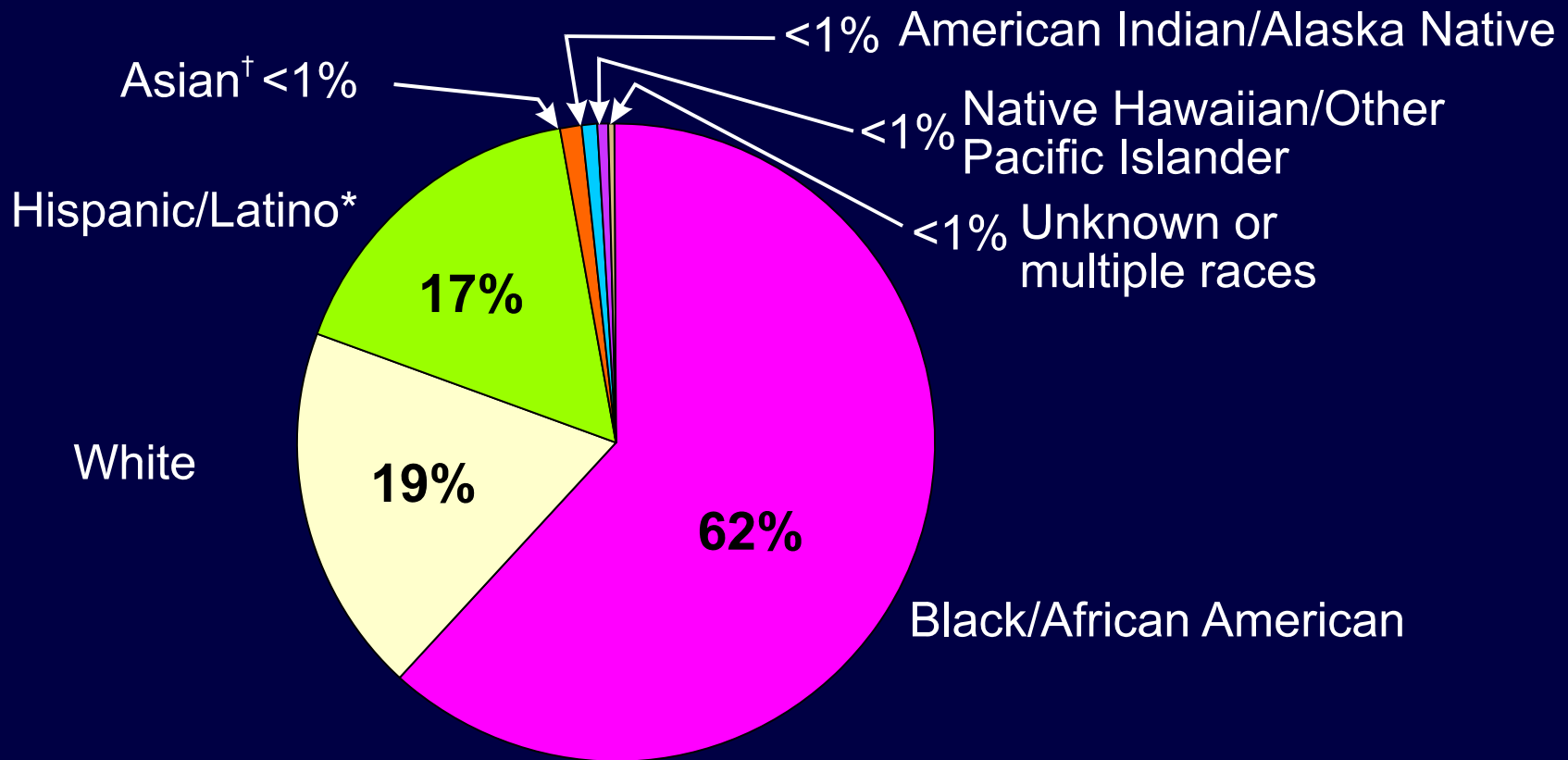
Note. Data include persons with a diagnosis of HIV infection regardless of their AIDS status at diagnosis. Data from 34 states with confidential name-based HIV infection reporting since at least 2003. Data have been adjusted for reporting delays and missing risk-factor information. Data exclude cases among men who had sex with other men and injected drugs.

†Includes Asian and Pacific Islander legacy cases.

\*Hispanics/Latinos can be of any race.



# Percentages of HIV/AIDS Cases among Men Who Have Sex with Men, Aged 13–24 Years by Race/Ethnicity, 2007—34 States



Note. Data include persons with a diagnosis of HIV infection regardless of their AIDS status at diagnosis. Data from 34 states with confidential name-based HIV infection reporting since at least 2003. Data have been adjusted for reporting delays and missing risk-factor information. Data exclude cases among men who had sex with other men and injected drugs.

†Includes Asian and Pacific Islander legacy cases.

\*Hispanics/Latinos can be of any race.



# Estimated Numbers of HIV/AIDS Cases among Adults and Adolescents Men Who Have Sex with Men, by Race/Ethnicity and Population of Area of Residence, 2007—34 States

Race/ethnicity	≥500,000	50,000–499,999	Non-metropolitan area
American Indian/Alaska Native	70	19	29
Asian*	276	17	1
Black/African American	6,838	1,122	647
Hispanic/Latino <sup>†</sup>	3,720	303	160
Native Hawaiian/Other Pacific Islander	30	6	2
White	6,938	1,187	718
Unknown or multiple races	151	21	14



Note. Data include persons with a diagnosis of HIV infection regardless of their AIDS status at diagnosis. Data from 34 states with confidential name-based HIV infection reporting since at least 2003. Data have been adjusted for reporting delays and missing risk-factor information. Data exclude cases among men who had sex with other men and injected drugs.

\*Includes Asian and Pacific Islander legacy cases.

<sup>†</sup>Hispanics/Latinos can be of any race.

